

California: The Art of Water
July 13 through November 28, 2016

Exhibition Checklist separated by themes:

1. water and the wilderness



John Ross Key (1832-1920)
Lake Tahoe 1870
Oil on canvas, 15 x 30 (framed 24 ½ x 39 ½ in.)
Private collection



Raymond Dabb Yelland (1848-1900)
Summer Morning Near Los Gatos, 1880
Oil on canvas, 24 x 48 in.
Collection of the Chambers Family,
courtesy of Joel B. Garzoli Fine Art



A.J. Doolittle, A.J. Holt and Leander Ransom

New Map Of The State of California and Nevada Territory, 1863
Pocket map, published by Warren Holt, San Francisco

Courtesy David Rumsey Map Collection, David Rumsey Map Center, Stanford Libraries



Albert Bierstadt (1830 – 1902)
Sacramento River Valley, c. 1872-73
Oil on canvas, 32 1/8 x 48 ¼ in., framed
Private collection



Thomas Hill (1829-1908)
Thomas Hill and Virgil Williams with Wives, Fishing, c. 1873
Oil on canvas, 14 x 11 in.
Private collection, courtesy of Joel B. Garzoli Fine Art



Joseph Holmes (1952-)
Clouds Over Mono Lake, 1975/1981

California: The Art of Water
July 13 through November 28, 2016

Gelatin silver print, 16 x 20 in.
Collection of the Oakland Museum
of California, The Shirley Burden
Fund for Photography



Robert Dawson (1950-)
Untitled #1, from the Mono Lake Series,
1970

Gelatin silver print, 7 1/8 x 12 in.
Iris & B. Gerald Cantor Center for
Visual Arts at Stanford University



William Marple (1827-1910)
Mount Tamalpais from Napa Slough,
1869

Oil on canvas, 20 x 32 in.
California Historical Society



William Keith (1838-1911)
Upper Kern River, 1876
Oil on canvas, 70-3/4 x 118-3/4 in
(canvas, sight): 74 x 122 x 3-3/8 in.
(framed)

179.7 x 301.6 cm. (canvas, sight):
187.9 x 309.9 x 8.6 cm. (framed)
Stanford Family Collections.
Conservation supported by the Lois
Clumeck Fund



Gregory Kondos (1923 -)
Sacramento River, 1981
Oil on canvas, 48 x 60 in.
Crocker Art Museum, Gift of First
Interstate Bank of California



Charles L. Weed (1828-1903)
The Yosemite Fall, 2634 Feet High, c.
1863

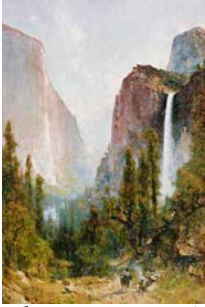
Albumen print, 15.25 x 20.25 in.
Collection of the Oakland Museum
of California, Gift of the Women's
Board



Carleton E. Watkins (1829-1916)
The Lower Yosemite Fall, 418 Feet I, c.
1861

Albumen print, mammoth plate, 20
5/8 x 15 5/8
Oakland Museum of California,
Gift of the Women's Board

California: The Art of Water
July 13 through November 28, 2016



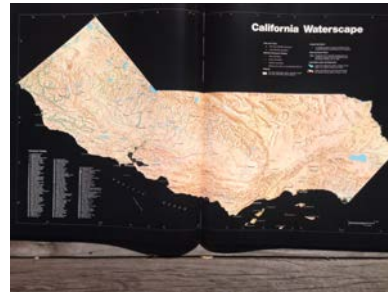
Thomas Hill (1829-1908)
Bridal Veil Fall, 1892
Oil on canvas, 53 x 35 in.
Oakland Museum of California, Gift
of Mrs. Leon Bocqveraz



Edward Sheriff Curtis (1869-1952)
*Before the White Man Came, Palm
Canyon*, 1924
Published by Suffolk Engraving Co.
Photogravure, 15 ½ x 11 ½ in.
Oakland Museum of California, ,
Museum Purchase



Eadweard Muybridge (1830-1904)
Pi-Wi-Ack, Valley of the Yosemite, 1872
Albumen print, mammoth plate, 21 x
16.75 in.
Oakland Museum of California, Gift
of Dr. and Mrs. Dudley P. Bell



William L. Kahrl, editor
The California Water Atlas, 1979
"California Waterscape."
State of California, North Highlands,
CA.
Hardcover book, 18 x 32 in.
Private collection



Albert Bierstadt (1830-1902)
*Lake Tahoe, Spearing Fish by
Torchlight*, c. 1875
Oil on canvas, 31 ½ x 49 in.
Private collection

2. The role of water in development



Thomas Hill (1829-1908)

California: The Art of Water
July 13 through November 28, 2016

Untitled (Irrigating Strawberry Farm),
1888
Oil on board, 20 x 18 in.
The Bancroft Library, University of
California, Berkeley



William Alexander Coulter (1849-
1936)
Stockton Channel, c. 1884
Oil on canvas, 26 1/6 x 44 1/16
The Haggin Museum, Stockton
California



Dorothea Lange (1895-1965)
*Field Worker Irrigating Alfalfa and
Barley Fields*, 1937
Gelatin silver print
The Bancroft Library, University of
California, Berkeley



George Henry Burgess (1831-1905)
View of San Francisco in 1850, 1878
Oil on canvas, 41 x 72 in.
Private collection



George William Casilear (1811-1893)
and Henry Bainbridge, artists
W.L. Ormsby, engraver (1809-1883)
*View of Sacramento City as It Appeared
during the Great Innundation in
January 1850*, c. 1850
Print on paper, lithograph, hand
colored, 23 x 35 in.
The Bancroft Library, University of
California, Berkeley



Robert Dawson (1950-)
*Pipe Containing Most of San
Francisco's Water Supply, Near Mather*,
1992
Gelatin silver print, 16 x 20 in.
Center for Creative Photography,
University of Arizona: Water in the
West Archive

⋮

California: The Art of Water
July 13 through November 28, 2016



William Keith (1838-1911)
Hetch Hetchy Valley, 1907-1910
Oil on canvas, 16 x 24 in. (22 ¾ x 30 5/8 in. framed)
Collection of Saint Mary's College
Museum of Art

The Bancroft Library, University of
California, Berkeley



Carleton E. Watkins (1829-1916)
The Kern Island Canal, 1888
From album: Watkins, *Photographic
Views of Kern County*
Photograph, 8 x 10 in.
Prints and Photographs Division,
Library of Congress, Washington
D.C.



Dorothea Lange (1895-1965)
Irrigator Large Scale Farming, ca. 1940
Gelatin silver print, 7.594 x 8.125 in.
Sheet: 7.938 in.
Oakland Museum of California
Gift of Paul S. Taylor



Thaddeus Welch (1844-1919)
Jewett Ranch, 1893
Oil on canvas, 29 3/4 x 49 ¾ in.
Kern County Museum



Peter Goin
*Irrigated grid, new peach orchard;
Sutter Buttes in background, Sutter
County.*
Photograph, 24 x 16" image, 28 x 20"
mat (vertical image)



Ferdinand Deppe ? (active 1794-
1861)
San Gabriel Mission, 1832
Oil on canvas, 27 x 37 in.
Laguna Art Museum, Gift of Nancy
Dustin Wall Moure



Ross Dickinson (1903-1978)
Valley Farms, 1934
Oil on canvas, 39 7/8 x 50 1/8 in.

California: The Art of Water
July 13 through November 28, 2016

Smithsonian American Art Museum,
Transfer from the U.S. Department
of Labor
1964.1.40



John Joseph Ivey (1842-1910)
Farm, Sacramento River Delta. ca. 1890
Gouache and watercolor on paper,
23 ½ x 36 in. (39 x 52 framed)
Joel B. Garzoli Fine Art



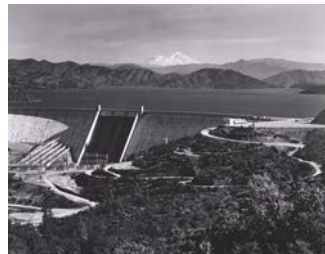
Stephen Johnson (1955-)
*Rice Fields, Sacramento River Near
Colusa*, 1984
Type C print, 16 x 20 in.
Lent by the artist



Stephen Johnson (1955-)
Aerial, San Joaquin Delta, 1985
Type C print, 16 x 20 in.
Lent by the artist



Robert Dawson (1950-)
Tunnel, Feather River, 1987
Gelatin silver print, 16 x 20 in.
Lent by the artist



Ansel Adams (1902-1984)
Shasta Dam and Mount Shasta, 1961
Image: 29 ½ x 36 9/16 in.
Gelatin silver print
Center for Creative Photography,
University of Arizona: Ansel Adams
Archive



Stephen Johnson (1955-)
California Aqueduct Near Tracy, 1984
Type C print, 16 x 20 in.
Lent by the artist



California: The Art of Water
July 13 through November 28, 2016

Ernest Narjot (1826-1898)
Placer Operations at Foster's Bar, 1851
Oil on panel, 12 x 14 in.
The Bancroft Library, University of California, Berkeley



Charles Christian Nahl (1818-1878) and August Wenderoth (1819-1884)
Miners in the Sierras, c. 1851-52
Oil on canvas mounted on canvas, 54 1/4 x 66 7/8 in.
Smithsonian American Art Museum
Gift of the Fred Heilbron Collection



Carleton E. Watkins (1829-1916)
Malakoff Diggins, North Bloomfield, Nevada County, Cal. c. 1869
Albumen print 15 1/4 x 20 5/8 in.
Department of Special Collections, Stanford University



3. what have we wrought?

Edward Burtynsky (1955-)
Row-Irrigation, Imperial Valley, 2009
Chromogenic print, 39 x 52 in.
Edward Burtynsky, courtesy of Von Lintel Gallery, Los Angeles



Peter Goin
Golf Course near Coachella
Digital pigment photograph, printed on Hahnmanuhle watercolor 350 gsm paper
Courtesy of the artist



Richard Misrach (1949-)
Diving Board, Salton Sea, 1983
Chromogenic print
18 1/4 x 22 7/8 in. (46.4 x 58.2cm.)
Collection of Carla Emil and Rich Silverstein



Nicole Antebi
Tilapia Jetty, 2007
Video
Nicole Antebi Collection

California: The Art of Water
July 13 through November 28, 2016



Anthony Hernandez (1947-)
Everything #2, 2004
Chromogenic print, 61 x 62 in.
(frame)
Oakland Museum of California
Gift of the Art Guild

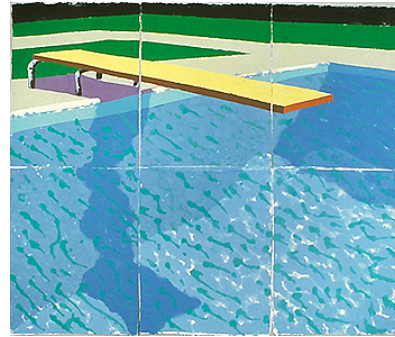
Courtesy of the artist and Haines
Gallery, San Francisco



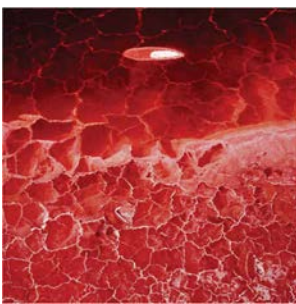
Edward Burtynsky (1955-)
Owens Lake #1, 2009
Chromogenic print, 39 x 52 in.
Edward Burtynsky, courtesy of Von
Lintel Gallery, Los Angeles



Anthony Hernandez (1947-)
*Public Fishing Area #1, Herbert C. Legg
Lake*, 1979
Gelatin silver print, 12 ¼ x 18 1/8 in.
Oakland Museum of California
Gift of the Art Docents in honor of
George Neubert with matching
funds from the National Endowment
for the Arts



David Hockney (1937-)
*Sprungbrett mit Schatten (Paper Pool
#14)*, 1978
Pigment in paper pulp
Collection of Harry W. and Mary
Margaret Anderson



David Maisel (1961 -)
The Lake Project 3, 2013
Pigment Print, 48 x 48 in.



Robert Dawson (1950-)
*Owens Valley Water Leaving Owens
Valley and Arriving in Los Angeles
(diptych)*, 1989
Gelatin silver print, 16 x 20 in.
Lent by the artist

California: The Art of Water
July 13 through November 28, 2016



David Maisel (1961 -)
Oblivion 15n, 2013
Pigment Print, 40 x 40 in.
Courtesy of the artist and Haines
Gallery, San Francisco



Robert Dawson (1950-)
*San Luis Drain, Kesterson National
Wildlife Refuge, California* from "Great
Central Valley Project" 1985
Gelatin silver print
14-14 x 18-1/4 in. (image): 15-3/4 x
20 in. (sheet)
36.2 x 46.4 cm (image): 40.0 x 50.8
cm. (sheet)
Gift of the artist
Iris & B. Gerald Cantor Center for
Visual Arts at Stanford University



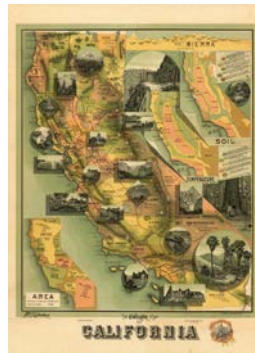
Edwin Deakin (1838-1923)
*Samuel Marsden Brookes Painting in
his Studio*, 1876
Oil on canvas, 36 x 28 in.
Private collection



Ernest Narjot (1826-1898)
*Leland Stanford's Picnic, Fountain
Grove, Palo Alto, California*, 1873
Oil on canvas, 30 x 25 in.
Collection of Elisabeth Waldo-
Dentzel



Samuel Marsden Brookes (1816 –
1892)
Steelhead Salmon, 1885
Oil on wood panel, 40 x 30 in.
Collection of the Oakland Museum
of California, Museum Purchase



Johnstone E. McD., Dickman-Jones
Co., Lithographers
"The Unique Map of California,"
1885

California: The Art of Water
July 13 through November 28, 2016

Map on paper, 25 x 19 in.
Courtesy David Rumsey Map
Collection, David Rumsey Map
Center, Stanford Libraries



William Hammond Hall (1846-1934)
Santa Ana Canal, Bear Valley
Irrigation, San Bernardino County, c.
1880s
Cyanotype panorama, 18 x 21 in.
each of six
California Historical Society