

Artist Statement

The work presented in this exhibition, like my recent work in general, continues to explore the nature of curiosity through a confrontation with an object. The result is often a "painted sculpture" placed in the ideal environment of painting's canvas. Initially, the forms are derived from sources of exploration – the museum, the archaeological dig, the attic, or the flea market. Here the intelligence, experience, and, most importantly, the sense of wonder of the viewer is focused on an object. At that moment we stop and understanding and curiosity is deeper.

I see this act as an oasis in an age of distraction and overload where the medium of painting can further reinforce the importance of stopping and reflecting. Painting is a process through which an image is built, where the essence of decision is reflected in broad passages of color or in a quick contradiction in thick paint. All arguments are present and this process of seeing challenges the anesthetized eye of our electronic landscape. Each image is worked to place the viewer alone with the "object" at the end of their pilgrimage to view it.

The artistic, creative process is a mysterious process. Robert Motherwell's metaphor of artists as "blind swimmers" is accurate. As an artist, I don't want to be the "master" of my work. The objects that an artist makes, creates, should have more possibilities, more mysteries, more knowledge than the artist.

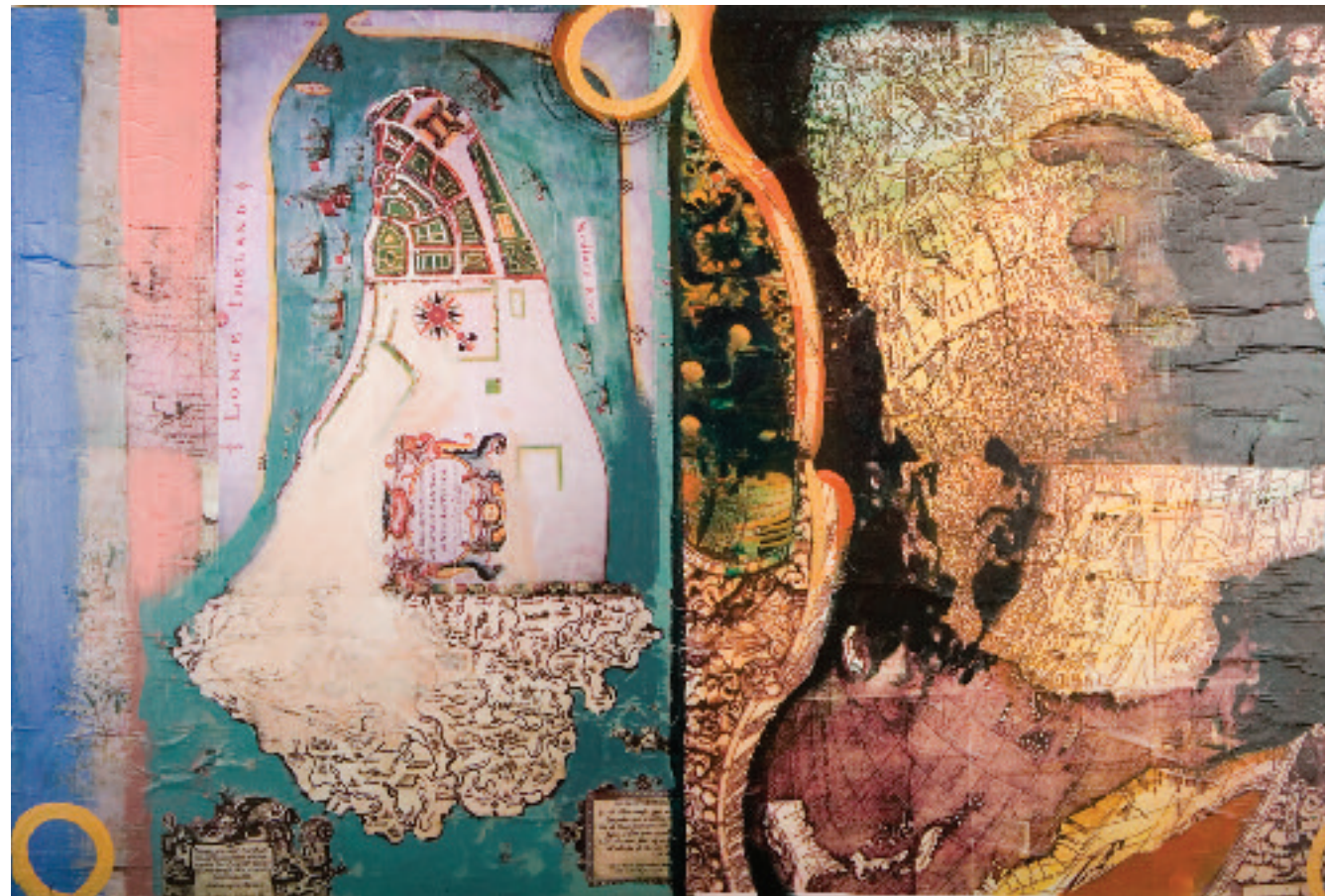
Chuck Olson



Chuck Olson, *Power/Desire*, 2005

"Throughout the work of Olson, there is to be discerned a striving to identify the significant...the question is the philosophical one, 'What is important?' In his latest work the search has become complex, political and cerebral."

-Graham Shearing, art critic and writer, *Visual Histories: Selected Paintings by Charles Olson*



Chuck Olson, *Carte Baroque*, 2006

DIRECTOR'S CIRCLE

Mr. and Mrs. William Benzel
Conemaugh Memorial Medical Center
Franciscan Friars, T.O.R.
Mr. and Mrs. C. Wesley Lingenfelter
Mr. and Mrs. Harry McCreary
Mr. and Mrs. Edgar Dean Nelson
Mr. and Mrs. Donald Robinson

MUSEUM ASSOCIATES

Drs. Harold and Betty Cottle
Mrs. Mary Weidlein

EXHIBITION SPONSORS

Dr. and Mrs. Magdi Azer
Dr. and Mrs. Joel Borkow
Hon. Timothy and Dr. Anne Creany
Mr. and Mrs. Donald Devorris
M & T Bank
Neil and Marilyn Port Family Foundation
North American Communications
Mrs. Fred A. Pechter
Mr. and Mrs. Gerald P. Wolf
Wolf-Kuhn Foundation

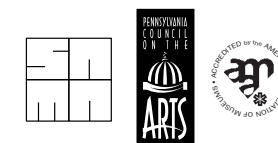
This catalogue is published by the
Southern Alleghenies Museum of Art
Post Office Box 9
Loretto, Pennsylvania 15940
(814) 472-3920

© 2007 Southern Alleghenies Museum of Art

Hours:

Tuesday through Friday: 10:00 a.m. to 5:00 p.m.
Weekends: 1:00 p.m. to 5:00 p.m.
Closed Mondays
Admission is free

Cover: Chuck Olson
Landscape: Lorraine, 2005



Chuck Olson: Visual Histories



Southern Alleghenies Museum of Art
Loretto, Pennsylvania

October 12, 2007 - February 10, 2008

Acknowledgment

The Southern Alleghenies Museum of Art is honored to present *Chuck Olson: Visual Histories*. This exhibition features the most recent body of Olson's work that moves beyond the abstract form of earlier imagery and takes the viewer on a fascinating journey of historical artifacts and landscapes. Chuck Olson has long been a part of the Museum's landscape and we are so pleased to share with you this exciting new work of such a valued colleague and collaborator. We hope *Visual Histories* will leave a significant mark on you, the viewer, and we welcome you to a reflective and engaging gallery exploration. We deeply thank our Director's Circle, Museum Associates and Exhibition Patrons, all of whom support our programming so loyally each year through our annual operating campaign. And, special thanks go to St. Francis University who embraces our mission and vigorously supports the arts in so many ways. This is certainly proving to be a most welcome and exciting part of this year's Museum exhibition calendar. Enjoy!

Eleanor Hart Feeley
Interim Director



Chuck Olson, *Shattered View: Summer*, 2005



Chuck Olson, *Ace of Spades*, 2007

CATALOGUE

19th C Africa/America, 2007
Acrylic on canvas, 48" x 72"
Courtesy of the artist

19th C Dutch/Arctic, 2007
Acrylic on canvas, 48" x 48"
Courtesy of the artist

19th C Paris/London, 2007
Acrylic on canvas, 48" x 72"
Courtesy of the artist

20th C Austria/Hungary, 2007
Acrylic on canvas, 48" x 24"
Courtesy of the artist

20th C Origins of War, 2007
Acrylic on canvas, 48" x 120"
Courtesy of the artist

20th C USA/Nationalism, 2007
Acrylic on canvas, 48" x 48"
Courtesy of the artist

Ace of Spades, 2007
Acrylic on canvas, 72" x 60"
Courtesy of the artist

Arabesque/Wind, 2005
Acrylic on paper, 40" x 32"
Courtesy of the artist

Artifact XX, 1992
Acrylic on paper, 40" x 32"
Collection of Mr. and Mrs.
Joseph Mack

Artifact XXX, 2001
Acrylic on ceramic, 20" x 6" x 4"
Collection of Allan and
Beth Scaggs

Baroque Heart, 2006
Acrylic on paper, 40" x 32"
Courtesy of the artist

Blind Ambition, 1994
Acrylic on paper, 12" x 16"
Courtesy of the artist

Blue Cairn/Red Sky, 2006
Acrylic on paper, 40" x 32"
Courtesy of the artist

Blue Dusk, 2005
Acrylic on paper, 40" x 32"
Courtesy of the artist

Blue Glass with Stripes, 2005
Acrylic on paper, 40" x 32"
Courtesy of the artist

Blue Heart X, 2006
Acrylic on paper, 40" x 32"
Courtesy of the artist

Blue Rising, 2006
Acrylic on paper, 40" x 32"
Collection of Drs. Imran and
Rabia Bajwa

Blue Stack, 2006
Acrylic on paper, 40" x 32"
Courtesy of the artist

Bronze Scepter, 2006
Acrylic on paper, 40" x 32"
Courtesy of the artist

Burgundy Vessel, 2005
Acrylic on paper, 40" x 32"
Courtesy of the artist

Canopic Jar X, 2006
Acrylic on paper, 40" x 32"
Courtesy of the artist

Canopic Jar XX, 2006
Acrylic on paper, 40" x 32"
Courtesy of the artist

Canopic Jar XXX, 2006
Acrylic on paper, 40" x 32"
Courtesy of the artist

Career Driven Life, 2007
Acrylic on canvas, 84" x 66"
Courtesy of the artist

Carte Baroque, 2006
Acrylic on canvas, 48" x 72"
Courtesy of the artist

Carte Renaissance, 2007
Acrylic on canvas, 48" x 120"
Courtesy of the artist

*Civil War: Chattanooga/Harpers
Ferry*, 2007
Acrylic on canvas, 48" x 60"
Courtesy of the artist

Civil War: Riverine, 2007
Acrylic on canvas, 48" x 60"
Courtesy of the artist

Civil War: Winchester, 2007
Acrylic on canvas, 48" x 72"
Courtesy of the artist

Driving North, 2004
Acrylic on paper, 40" x 18"
Courtesy of the artist

Euro Map 1850: London/Paris, 2006
Acrylic on canvas, 48" x 72"
Courtesy of the artist

Euro Map 1850: St. Petersburg, 2007
Acrylic on canvas, 48" x 48"
Courtesy of the artist

Euro Map 1850: Stockholm, 2007
Acrylic on canvas, 48" x 72"
Courtesy of the artist

Faience Heart, 2006
Acrylic on paper, 40" x 32"
Courtesy of the artist

Floating Heart, 2006
Acrylic on paper, 40" x 32"
Courtesy of the artist

France/Etats-Unis, 2007
Acrylic on Masonite, 8" x 10"
Courtesy of the artist

French & Indian: Chesapeake, 2007
Acrylic on canvas, 48" x 48"
Courtesy of the artist

French & Indian: Ft. Duquesne/NJ,
2007
Acrylic on canvas, 48" x 84"
Courtesy of the artist



Chuck Olson, *Landscape: Champagne*, 2005

French & Indian: New York, 2007
Acrylic on canvas, 48" x 60"
Courtesy of the artist

From the Garden, 2005
Acrylic on canvas, 72" x 66"
Courtesy of the artist

Granicus, 2005
Acrylic on canvas, 72" x 84"
Courtesy of the artist

Green Glass/Blue Sky, 2005
Acrylic on paper, 40" x 32"
Courtesy of the artist

Green Heart/Red Land, 2005
Acrylic on paper, 40" x 32"
Courtesy of the artist

Grey Striped Vessel, 2005
Acrylic on paper, 40" x 32"
Courtesy of the artist

Gun America, 2006
Acrylic on paper, 40" x 32"
Courtesy of the artist

Harp, 2005
Acrylic on canvas, 72" x 60"
Courtesy of the artist

Heart Over Blue, 2005
Acrylic on paper, 40" x 32"
Courtesy of the artist

Italian Mountain, 2007
Acrylic on Masonite, 10" x 8"
Courtesy of the artist

Jack in the Box, 1992
Acrylic on canvas, 5 1/2" x 8 1/2"
Collection of Myron Hay Tomb

L'Ancien Gue, 2005
Acrylic on paper, 40" x 32"
Courtesy of the artist

Landscape and Memory, 2005
Acrylic on canvas, 72" x 96"
Courtesy of the artist

Landscape Pacific, 2005
Acrylic on canvas, 72" x 84"
Courtesy of the artist

Landscape: Champagne, 2005
Acrylic on canvas, 72" x 60"
Courtesy of the artist

Landscape: Lorraine, 2005
Acrylic on canvas, 48" x 60"
Courtesy of the artist

Landscape: Po Valley, 2004
Acrylic on canvas, 40" x 72"
Courtesy of the artist

Looted/Lost, 2005
Acrylic on paper, 18" x 15"
Courtesy of the artist

Magic Flute/Mozart, 2006
Acrylic on paper, 40" x 32"
Courtesy of the artist

Mannados Town/NYC, 2007
Acrylic on Masonite, 8" x 10"
Courtesy of the artist

Medieval: England, 2007
Acrylic on canvas, 48" x 72"
Courtesy of the artist

Medieval: Map 740, 2007
Acrylic on canvas, 48" x 24"
Courtesy of the artist

Medieval: Mediterranean, 2007
Acrylic on canvas, 48" x 96"
Courtesy of the artist

Mission: Preemptive, 2000
Acrylic on paper, 30" x 30"
Courtesy of the artist

Night Cycles, 1999
Acrylic on paper, 24" x 24"
Courtesy of the artist

Non Western: Aztec/Japanese, 2007
Acrylic on canvas, 48" x 96"
Courtesy of the artist

Non Western: Chinese, 2007
Acrylic on canvas, 48" x 72"
Courtesy of the artist

Non Western: Indian, 2007
Acrylic on canvas, 48" x 24"
Courtesy of the artist

Observer Series: Atlas, 2004
Acrylic on canvas, 18" x 36"
Courtesy of the artist

Observer Series: Plain of Jars, 2004
Acrylic on canvas, 18" x 36"
Courtesy of the artist

Offering I, 2004
Acrylic on canvas, 48" x 48"
Courtesy of the artist

Open Forms, 2005
Acrylic on paper, 40" x 32"
Courtesy of the artist

Over Water I, 2003
Acrylic on canvas, 72" x 96"
Courtesy of the artist

Over Water II, 2003
Acrylic on canvas, 72" x 96"
Courtesy of the artist

Over Water III, 2003
Acrylic on canvas, 72" x 96"
Courtesy of the artist

Pop Building, 1998
Acrylic on canvas, 84" x 84"
Gift of the artist
Collection of the Southern
Alleghenies Museum of Art

Power Series: The Approach, 2005
Acrylic on canvas, 72" x 72"
Courtesy of the artist

Power/Desire, 2005
Acrylic on canvas, 84" x 72"
Courtesy of the artist

R. D. 94, 1994
Acrylic on paper, 30" x 30"
Collection of Allan and
Beth Scaggs

Red Cave, 2006
Acrylic on paper, 40" x 32"
Courtesy of the artist

Red Vessel/Landscape, 2005
Acrylic on paper, 40" x 32"
Courtesy of the artist

Red Wall, 2005
Acrylic on paper, 40" x 32"
Courtesy of the artist

Regalo Rosso, 2005
Acrylic on paper, 40" x 32"
Courtesy of the artist

Ruin Blue, 2006
Acrylic on paper, 40" x 32"
Courtesy of the artist

*S'il Me Regarde, Ils Me
Regardent*, 2007
Acrylic on canvas, 72" x 60"
Courtesy of the artist

*Secrets of the Ancient
Regime*, 1995
Acrylic on paper, 22" x 30"
Courtesy of the artist

*Secrets of the Ancient
Regime XX*, 1996
Acrylic on paper, 27" x 39"
Courtesy of the artist

Seven Hills I, 2006
Acrylic on paper, 40" x 32"
Courtesy of the artist

Seven Hills II, 2006
Acrylic on paper, 40" x 32"
Courtesy of the artist

Seven Hills III, 2006
Acrylic on paper, 40" x 32"
Courtesy of the artist

Seven Hills IV, 2006
Acrylic on paper, 40" x 32"
Courtesy of the artist

Seven Hills V, 2006
Acrylic on paper, 40" x 32"
Courtesy of the artist

Seven Hills VII, 2006
Acrylic on paper, 40" x 32"
Courtesy of the artist

Shattered View: Summer, 2005
Acrylic on canvas, 72" x 60"
Courtesy of the artist

Small Map #17, 2006
Acrylic on paper, 5" x 7"
Courtesy of the artist

Small Map #18, 2006
Acrylic on paper, 5" x 7"
Courtesy of the artist

Small Map #19, 2006
Acrylic on paper, 5" x 7"
Courtesy of the artist

Small Map #22, 2006
Acrylic on paper, 5" x 7"
Courtesy of the artist

Small Map #24, 2006
Acrylic on paper, 5" x 7"
Courtesy of the artist

Small Map #25, 2006
Acrylic on paper, 5" x 7"
Courtesy of the artist

Source, 2003
Acrylic on paper, 16" x 16"
Courtesy of the artist

Temptation, 1991
Acrylic on canvas, 118" x 54"
Collection of Ola and
Krys Kaniasty

The Meeting Place, 2007
Acrylic on Masonite, 16" x 12"
Courtesy of the artist

The Yellow Rattle, 2005
Acrylic on paper, 40" x 32"
Courtesy of the artist

Time/Space, 2005
Acrylic on canvas, 84" x 72"
Courtesy of the artist

Toward the Old Fort, 2007
Acrylic on Masonite, 12" x 16"
Courtesy of the artist

Tribute, 2006
Acrylic on paper, 40" x 32"
Courtesy of the artist

Utopia, 2007
Acrylic on Masonite, 8" x 10"
Courtesy of the artist

Voyage to Tangiers, 2007
Acrylic on Masonite, 8" x 10"
Courtesy of the artist

Walking Alone I, 2003
Acrylic on paper, 32" x 40"
Courtesy of the artist

Walking Alone IV, 2003
Acrylic on paper, 32" x 40"
Courtesy of the artist

Winter Map, 2007
Acrylic on canvas, 54" x 72"
Courtesy of the artist

Work Surface, 1996
Acrylic on paper, 34" x 34"
Collection of Allan and
Beth Scaggs

Yellow Artifact, 2001
Acrylic on ceramic, 20" x 6" x 4"
Courtesy of the artist

Yellow Glass (schludersi), 2005
Acrylic on paper, 40" x 32"
Courtesy of the artist



Chuck Olson, *Non Western: Aztec/Japanese*, 2007