



Coney Island: Visions of an American Dreamland, 1861–2008
Jan. 31 – May 31, 2015
Exhibition Checklist

DOWN AT CONEY ISLE, 1861-94

1. Sanford Robinson Gifford
The Beach at Coney Island, 1866
Oil on canvas
10 x 20 inches
Courtesy of Jonathan Boos
2. Francis Augustus Silva
Schooner "Progress" Wrecked at Coney Island, July 4, 1874, 1875
Oil on canvas
20 x 38 1/4 inches
Manoogian Collection, Michigan
3. John Mackie Falconer
Coney Island Huts, 1879
Oil on paper board
9 5/8 x 13 3/4 inches
Brooklyn Historical Society, M1974.167
4. Samuel S. Carr
Beach Scene, c. 1879
Oil on canvas
12 x 20 inches
Smith College Museum of Art, Northampton, Massachusetts, Bequest of Annie Swan Coburn (Mrs. Lewis Larned Coburn), 1934:3-10
5. Samuel S. Carr
Beach Scene with Acrobats, c. 1879-81
Oil on canvas
6 x 9 inches
Collection Max N. Berry, Washington, D.C.
6. William Merritt Chase
At the Shore, c. 1884
Oil on canvas
22 1/4 x 34 1/4 inches
Private Collection



7. John Henry Twachtman
Dunes Back of Coney Island, c. 1880
Oil on canvas
13 7/8 x 19 7/8 inches
Frye Art Museum, Seattle, 1956.010



8. William Merritt Chase
Landscape, near Coney Island, c. 1886
Oil on panel
8 1/8 x 12 5/8 inches
The Hyde Collection, Glens Falls, N.Y., Gift of Mary H. Beeman to the Pruyn Family Collection, 1995.12.7



9. August Laux
View of Brooklyn and Staten Island from Coney Island, c. 1890s
Oil on canvas
11 15/16 x 20 inches
Brooklyn Historical Society, M1984.7



10. Strobridge Lithographing Company
The Barnum & Bailey Greatest Show on Earth / The Great Coney Island Water Carnival / Remarkable Head-Foremost Dives from Enormous Heights into Shallow Depths of Water, 1898
Color lithograph poster
38 7/8 x 28 3/4 inches
Cincinnati Art Museum. Gift of the Strobridge Lithographing Company, 1965.830



THE WORLD'S GREATEST PLAYGROUND, 1895-1929

11. Leo McKay
Steeplechase Park, 1903–06
Oil on canvas
51 x 80 inches
Museum of the City of New York. Gift of Mrs. George C. Tilyou, 54.167



12. *Steeplechase Funny Face*, n.d.
Painted metal
23 inches
Collection of Ken Harck



13. *Mae West and Jimmy Durante*, c. 1910
Oil on hard board, cut out
46 x 53 1/2 x 1/4 inches
Collection of Harvey Fierstein



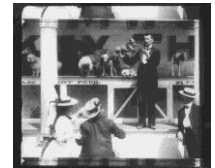
14. Camera: Edwin S. Porter; The Edison Manufacturing Company
Coney Island at Night, 1905
Film clip, running time: 43 seconds
Copyright Kino International Corp.



15. Joseph Stella
Battle of Lights, Coney Island, Mardi Gras, 1913–14
Oil on canvas
77 x 84 3/4 inches
Yale University Art Gallery, New Haven, Conn. Gift of Collection
Société Anonyme, 1941.689



16. Produced and directed by Edwin S. Porter; The Edison Manufacturing Company
Rube and Mandy at Coney Island, 1903
Film clip, running time: 1 minute



17. Directed by Roscoe Arbuckle; Comique Film Corporation
Fatty at Coney Island, 1917
Film clip, running time: 1 minute, 8 seconds



18. Jan Matulka
Sky Chaser, Coney Island, c. 1923
Watercolor and gouache on paper
17 1/4 x 23 1/2 inches
Collection of Susan and Kevin Flynn courtesy McCormick Gallery, Chicago



19. Jane Peterson
Luna Park, c. 1918
Gouache on paper
18 x 24 inches
Private Collection



20. Walker Evans
Couple at Coney Island, New York, 1928
Gelatin silver print
8 x 5 13/16 inches
The Metropolitan Museum of Art, New York, Ford Motor Company Collection. Gift of Ford Motor Company and John C. Waddell, 1987 (1987.1100.110)



21. Walker Evans
Luna Park, Coney Island, New York, 1928-29
Gelatin silver print
4 3/16 x 2 7/16 inches
The Metropolitan Museum of Art, New York, Ford Motor Company Collection. Gift of Ford Motor Company and John C. Waddell, 1987 (1987.1100.416)



22. *Gambling Wheel*, 1900-1920

Wood, glass, metal

65 inches (diam) x 14 inches (depth)

Collection of The New-York Historical Society. Purchase, 1995.2



23. Charles I. D. Looff

Arabian Camel Stander, c. 1895

Paint on wood, jewels, and glass eyes

57 1/2 x 51 inches

The New England Carousel Museum, Bristol, Conn., The Goodman Collection



24. Winsor McCay

Little Nemo in Slumberland, Sep. 30, 1906

Ink on paper

22 5/16 x 16 inches

The Ohio State University Billy Ireland Cartoon Library & Museum, WGCGA-Woody Gelman Collection



25. Winsor McCay

Little Nemo in Slumberland, April 18, 1909

Ink on paper

28 1/2 x 22 1/2 inches

Private Collection



26. Winsor McCay

Little Nemo in Slumberland, April 18, 1909

Ink on paper

22 1/16 x 16 1/4 inches

The Ohio State University Billy Ireland Cartoon Library & Museum, WGCGA-Woody Gelman Collection



27. Winsor McCay

Little Nemo in Slumberland, Nov. 13, 1910

Ink on paper

23 1/4 x 16 5/8 inches

The Ohio State University Billy Ireland Cartoon Library & Museum, WGCGA-Woody Gelman Collection



28. *Bostock Arena*, 1906

Lithograph

32 1/2 x 23 1/4 inches

Collection of Ken Harck



29. *Bostock's Great Animal Arena, Dreamland, Coney Island*

c. 1907 Lithograph

31 x 40 inches

Collection of Ken Harck



30. William J. Glackens
The Fruit Stand, Coney Island
 c. 1898 Oil on canvas
 25 1/2 x 31 inches
 Collection of Museum of Art, Fort Lauderdale, Nova Southeastern University. Acquired by exchange through the gift of Mrs. Donald C. Ozmun



31. Milton Avery
The Steeplechase, Coney Island, 1929
 Oil on canvas
 32 x 40 inches
 The Metropolitan Museum of Art, New York. Gift of Sally M. Avery, 1984 (1984.527)



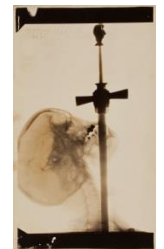
32. Abraham Walkowitz
Side Show at Coney Island, n.d.
 Oil on canvas
 26 x 40 inches
 Collection of the Newark Museum. Gift of Abraham Walkowitz in memory of Beatrice Winser, 1953, 53.31



33. Edward J. Kelty
Harlem Black Birds, Coney Island, 1930
 Photograph
 12 x 20 inches
 Collection of Ken Harck



34. Edward J. Kelty
X-ray of Ajax, "The Sword Swallower", 1928
 Photograph
 20 x 12 inches
 Collection of Ken Harck



35. Edward J. Kelty
Wonderland Circus Sideshow, Coney Island, 1929
 Photograph
 12 x 20 inches
 Collection of Ken Harck



36. Mabel Dwight (artist); George Charles Miller (printer)
Mechano Marvel of the Age, 1928
 Color lithograph
 12 5/16 x 9 5/16
 Yale University Art Gallery, New Haven, Conn. Everett V. Meeks, B.A. 1901, Fund, 2010.123.1



37. Reginald Marsh
Huber's Museum (Ballyhoo scene at Coney Island), 1928
 Lithograph
 12 3/4 x 18 3/4 inches
 Yale University Art Gallery, New Haven, Conn. Gift of the artist, 1929.146



38. Edward J. Kelty
Huber's Museum, Coney Island, 1927
 Photograph
 12 x 20 inches
 Collection of Ken Harck



39. Directed by Ted Wilde; Harold Lloyd Corporation
Speedy, 1928
 Film clip, running time: 46 seconds
 Licensed by Harold Lloyd Entertainment, Inc.



40. Directed by King Vidor; Metro-Goldwyn-Mayer (MGM)
The Crowd, 1928
 Film clip, running time: 51 seconds
 Licensed by Warner Bros. Entertainment Inc.



THE NICKEL EMPIRE, 1930-39

41. Directed by Wesley Ruggles; Paramount Pictures
The Gilded Lily, 1935
 Film clip, running time: 1 minute, 15 seconds
 Courtesy of Universal Studios Licensing LLC



42. Reginald Marsh
George C. Tilyou's Steeplechase Park, 1936
 Egg tempera on fiberboard
 36 x 48 inches
 Hirshhorn Museum and Sculpture Garden, Smithsonian Institution,
 Washington, D.C. Gift of the Joseph H. Hirshhorn Foundation, 1966, 66.3356



43. Reginald Marsh
Wooden Horses, 1936
 Tempera on board
 24 x 40 inches
 Wadsworth Atheneum Museum of Art, Hartford, Conn. The Dorothy Clark Archibald and Thomas L. Archibald Fund, The Kriebel Family Fund for American Art, The American Paintings Purchase Fund, and The Ella Gallup Sumner and Mary Catlin Sumner Collection Fund, 2013.1.1



44. Solomon Stein and Harry Goldstein
Armoured Horse, Coney Island, Brooklyn, New York, c. 1912-17
 Paint on wood with glass eyes, leather bridle, and horsehair tail
 58 5/8 x 63 x 14 7/8 inches
 Collection American Folk Art Museum, New York. Gift of the City of New York,
 Department of Parks and Recreation, 1982.4.1



45. Charles Carmel
Carousel Horse with Raised Head, Coney Island, Brooklyn, New York, c. 1914 Paint on wood, jewels, glass eyes, horsehair tail
 62 x 58 x 14 inches
 Collection American Folk Art Museum, New York. Gift of Laura Harding,
 1978.18.2



46. Joseph Delaney
Coney Island, 1932
 Oil on canvas
 18 x 24 inches
 The Art Institute of Chicago. Gift of Clarence S. Wilson, Jr., and Helena
 Chapellin Wilson, 1991.99



47. Vadim Chernoff
The Dive, Coney Island Circus, 1934
 Oil on canvas
 31 x 22 inches
 Collection of Richard I. Mintzer, Port Washington, N.Y.



48. Harry Roseland
Coney Island Fair Amusement Palace, Night in Egypt, 1932
 Oil on canvas
 36 x 40 inches
 Private Collection



49. Reginald Marsh
Wonderland Circus, Sideshow Coney Island, 1930
 Tempera on canvas stretched on Masonite
 48 3/4 x 48 inches
 Collection of The John and Mable Ringling Museum of Art, the State
 Art Museum of Florida, Florida State University, Sarasota, SN951



50. Nieman Studios, Inc., Chicago
Shackles the Great, 1940
 Sideshow banner
 118 x 108 inches
 Collection of Ken Harck



51. *Quito, Human Octopus, 1940*
 Sideshow banner
 140 x 117 inches
 Collection of Ken Harck



52. Nieman Studios, Inc., Chicago
Jeanie Living Half Girl, 1940
 Sideshow banner
 94 x 117 inches
 Collection of Ken Harck



53. Reginald Marsh
Pip and Flip, 1932
 Tempera on paper mounted on canvas
 48 1/4 x 48 1/4 inches
 Terra Foundation for American Art, Chicago. Daniel J. Terra Collection, 1999.96



54. Directed by Tod Browning; Metro-Goldwyn-Mayer (MGM)
Freaks, 1932
 Film clip, running time: 1 minute, 4 seconds
 Licensed by Warner Bros. Entertainment Inc.



55. Reginald Marsh
Adults 10 Cents, Children 5 Cents, 1936
 Egg tempera and oil glazes on paper mounted on Masonite
 36 x 48 inches
 Private Collection



56. Robert Riggs
July 4 at Coney, 1938
 Tempera on panel
 9 x 23 inches
 Private Collection



57. Reginald Marsh
Coney Island Beach, 1934
 Egg tempera on board
 35 5/8 x 39 5/8 inches
 Yale University Art Gallery, New Haven, Conn. Gift of Mrs. Reginald Marsh, 1963.22.1



58. Paul Cadmus
Coney Island, 1934
 Oil on canvas
 32 7/16 x 36 5/16 inches
 Los Angeles County Museum of Art. Gift of Peter Paanakker, 59.72



59. Yasuo Kuniyoshi
Coney Island, 1938
 Gelatin silver print
 7 9/16 x 9 9/16 inches (image); 15 15/16 x 21 15/16 inches (mount)
 The Metropolitan Museum of Art, New York. Gilman Collection,
 Purchase, Gift of Arnold H. Crane, by exchange, 2005 (2005.100.836)



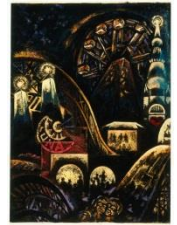
60. Yasuo Kuniyoshi
Coney Island, 1938
 Gelatin silver print
 7 1/2 x 9 3/8 inches
 Yale University Art Gallery, New Haven, Conn. Everett V. Meeks, B.A. 1901,
 Fund, 2010.96.1



61. Lisette Model
Coney Island Bather, New York, c. 1939 – July 1941
 Gelatin silver print
 39 3/4 x 31 1/2 inches
 International Center of Photography, New York. Gift of Lisette Model Foundation
 in memory of Joseph G. Blum, 1993, 116.1993



62. Louis Lozowick
Coney Island, 1935
 Casein on paper
 13 1/4 x 9 3/4 inches
 Brooklyn Museum. Purchased with funds given by Nona Breen and the
 Dick S. Ramsay Fund, 1991.45



63. Mort Künstler
Coney Island, 1953
 Gouache on paper
 17 x 25 inches
 Collection of the artist



64. Weegee
Coney Island Beach, 1940
 Gelatin silver print
 8 1/8 x 10 inches
 The Metropolitan Museum of Art, New York. Ford Motor Company
 Collection, Gift of Ford Motor Company and John C. Waddell, 1987,
 1987.1100.252



A CONEY ISLAND OF THE MIND, 1940-61

65. Directed by Sam Wood; Frank Ross-Norma Krasna Inc.
The Devil and Miss Jones, 1941
 Film clip, running time: 2 minutes, 30 seconds
 Licensed by Criterion Pictures



66. Morris Engel
Coney Island, N.Y., early 1940s
 Photograph
 10 9/16 x 11 1/2 inches
 Yale University Art Gallery, New Haven, Conn. Purchased with the
 aid of funds from the National Endowment for the Arts and the Mr. and Mrs.
 Carl L. Seldon Matching Fund, 1979.47.6



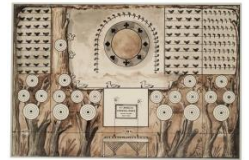
67. Morris Engel
Coney Island Embrace, New York City, 1938
 Gelatin silver print
 10 9/16 x 11 1/2 inches
 Orkin/Engel Film and Photo Archive, New York



68. Miklos Suba
20 Shots, 5 Cents, 1943
 Pen, ink, and watercolor on paper
 13 7/8 x 16 7/8 inches
 GRAHAM, James Graham & Sons, Inc., New York



69. W.F. Mangels Co. Carousel Works
Drawing for Shooting Gallery with Birds within Forest Scene, c. 1907-1920
 Ink and gouache on paper
 10 x 18 inches
 Collection of Frank Maresca



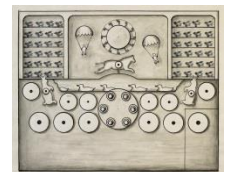
70. W.F. Mangels Co. Carousel Works
Windmill Shooting Gallery Target, c. 1907-20
 Painted cast iron
 24 x 24 inches
 Collection of Sanford L. Smith and Jill Bokor



71. W.F. Mangels Co. Carousel Works
Shooting Gallery Target, c. 1907-20
 Painted cast iron
 54 1/2 x 36 x 10 inches (with base)
 Collection of Sanford L. Smith and Jill Bokor



72. W.F. Mangels Co. Carousel Works
Drawing for Shooting Gallery with Parachutists, c. 1907-1920
 Ink and gouache on paper (diptych)
 10 x 18 inches
 Collection of Frank Maresca



73. Reginald Marsh
World in Wax, 1944
 Watercolor on paper
 25 7/8 x 39 1/4 inches
 Collection of Sanford L. Smith and Jill Bokor



74. Yasuo Kuniyoshi
My Man, 1943
 Casien on board
 14 3/4 x 10 1/2 inches
 The Art Institute of Chicago, Olivia Shaler Swan Memorial Collection, 1944.426



75. Weegee
[Luna Park Razed by Fire, Coney Island, Brooklyn], Aug. 13, 1944
Gelatin silver print
10 3/4 x 13 9/16 inches (image); 11 3/16 x 14 inches (paper)
International Center of Photography, New York. Bequest of Wilma Wilcox, 1993, 1088.1993



76. Morris Engel
Mother with Children, 1938
Gelatin silver print
8 x 10 inches
Orkin/Engel Film and Photo Archive, New York



77. Morris Engel
Shoe Shine, Coney Island, NYC, 1945
Photograph
10 7/16 x 13 3/8 inches
Yale University Art Gallery, New Haven, Conn. Purchased with the aid of funds from the National Endowment for the Arts and the Mr. and Mrs. Carl L. Seldon Matching Fund, 1979.47.7



78. A Morris Engel Production
Little Fugitive, 1953
Film clip, running time: 1 minute, 36 seconds
Orkin/Engel Film and Photo Archive, New York



79. Morris Engel
Under the Boardwalk, Coney Island [Production still from Little Fugitive], 1953
Gelatin silver print
8 x 10 inches
Orkin/Engel Film and Photo Archive, New York



80. Sid Grossman
Coney Island, 1947–48
Vintage gelatin silver print
7 3/4 x 9 1/8 inches
Yale University Art Gallery, New Haven, Conn. Everett V. Meeks, B.A. 1901, Fund, 2004.33.6



81. Sid Grossman
Coney Island, 1947–48
Vintage gelatin silver print
8 1/4 x 7 5/8 inches
Yale University Art Gallery, New Haven, Conn. Everett V. Meeks, B.A. 1901, Fund, 2004.33.5



82. Homer Page
Coney Island (Couple on Beach), c. 1949
Gelatin silver print
8 5/8 x 13 inches
The Nelson-Atkins Museum of Art, Kansas City, Mo. Gift of Hallmark Cards, Inc., 2005.27.2112



83. Harold Feinstein
Man with His Daughters at the Side-Show, Coney Island, 1949 [ed.20]
 Gelatin silver print
 20 x 16 inches
 Panopticon Gallery, Boston, and the artist



84. Bruce Davidson
Brooklyn Gang, Couple Embracing under the Boardwalk, 1959, printed later
 Gelatin silver print
 11 x 14 inches
 Yale University Art Gallery, New Haven, Conn. Janet and Simeon Braguin Fund, 2004.33.1



85. Bruce Davidson
Untitled (Cathy and Cigarette Machine), from the series *Brooklyn Gang*
 1959, printed later
 Gelatin silver print
 Image: 8 3/8 x 12 5/8; sheet: 11 x 14 inches
 Yale University Art Gallery, New Haven, Conn. The Heinz Family Fund, 2009.214.1



86. Produced and directed by Valentine Sherry; camera: Carroll Siskind
Coney Island, U.S.A., 1951
 Film clip, running time: 1 minute, 38 seconds
 Coney Island Films



87. George Tooker
Coney Island, 1948
 Egg tempera on gesso panel
 19 1/4 x 26 1/4 inches
 Curtis Galleries, Minneapolis, 2002.12.05.2



88. Henry Koerner
Study for "Tunnel of Love", c. 1947
 Pen and India ink on tissue paper
 12 1/2 x 12 inches
 Private Collection



89. Henry Koerner
Tunnel of Love, 1947
 Oil on Masonite in a hand-painted frame by the artist
 36 1/2 x 28 inches
 Yale University Art Gallery, New Haven, Conn. Purchased with the Katharine Ordway Fund and a gift from Laila Twigg-Smith, by exchange, 2011.85.1



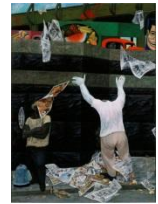
90. Reginald Marsh
Riders in a Mermaid Tunnel Boat, 1946
 Brush and black ink, gray wash and watercolor on textured white woven paper
 31 x 22 1/2 inches
 Terra Foundation for American Art, Chicago. Gift of Marjorie and Charles Benton, C1982.7ab



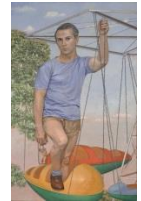
91. Henry Koerner
The Barker's Booth, 1948–49
Oil on Masonite
26 x 40 1/2 inches
Collection of Alice A. Grossman



92. Henry Koerner
It Isn't the Heat, It's the Humidity, 1947–48
Oil on Masonite
36 x 26 3/8 inches
Carnegie Museum of Art, Pittsburgh. Purchase: gift of the Judith Rothschild Foundation, 2001.29



93. Henry Koerner
Springtime for Henry, 1950
Casein on canvas
52 3/4 x 34 inches
Private Collection



94. Leonard Everett Fisher
Coney Island, 1949
Pure egg tempera on gesso on untampered Masonite
34 1/4 x 46 inches
Collection of C. Erdelac



95. *Spook-A-Rama Ride Mural (fragment)*, c. 1950
Oil on canvas mounted on Masonite
88 3/4 x 52 3/4 x 2 1/4 inches
Collection of Harvey Fierstein



96. *Ball toss targets*
Paint, cloth, wood
38 x 14 x 3 inches
Collection of Harvey Fierstein



97. Garry Winogrand
Coney Island, New York City, N.Y., 1952
Silver bromide
8 1/2 x 13 inches
Yale University Art Gallery, New Haven, Conn. Gift of Barbara and James L. Melcher, 1978.149.1



98. Diane Arbus
Couple Arguing, Coney Island, N.Y., 1960
Vintage gelatin silver print
8 1/2 x 6 5/8 inches [image]; 14 x 11 inches [sheet]
Collection Thomas H. Lee and Ann Tenenbaum



99. Diane Arbus
Wax Museum Strangler, Coney Island, N.Y., 1960
 Gelatin silver print
 Fraenkel Gallery, San Francisco
 8 3/8 x 5 1/2 inches



100. Diane Arbus
The House of Horrors, Coney Island, N.Y., 1961
 Gelatin silver print
 14 1/2 x 14 inches
 Fraenkel Gallery, San Francisco



101. Robert Frank
Coney Island, Fourth of July, neg. 1958; print 1962
 Gelatin silver print
 16 3/4 x 11 1/2 inches
 Addison Gallery of American Art, Phillips Academy, Andover, Mass. Gift of
 Katherine D. and Stephen C. Sherrill (PA 1971, and P 2005, 2007, 2010), 1998.118



102. Robert Frank
Coney Island, July 4, 1958
 15 5/8 x 11 9/16 inches
 Gelatin silver print
 National Gallery of Art, Washington, D.C., Robert Frank Collection. Gift of the
 Richard Florsheim Art Fund and an Anonymous Donor, 1995.19.1



103. Robert Frank
Coney Island, Fourth of July, neg. 1958
 Gelatin silver print
 10 13/16 x 16 5/16 inches
 Addison Gallery of American Art, Phillips Academy, Andover, Mass. Gift of the
 artist, 1996.69



104. Frank Stella
Coney Island, 1958 Oil on canvas
 85 1/4 x 78 3/4 inches
 Yale University Art Gallery, New Haven, Conn. Gift of Larom B.
 Munson, B.A. 1951, 1971.38



105. Directed by Weegee
Weegee's New York, 1948/54
 Film clip, running time: 2 minutes, 27 seconds
 International Center of Photography, New York



106. Abe Feinstein
Astroman at Coney Island's Astroland, 1963; reprinted 2014
 Photograph
 10 x 8 inches (unmatted, unframed)
 Coney Island History Project / Astroland Archives



REQUIEM FOR A DREAM, 1962-2008

107. Charles Denson

Astroland Star, 2007

Photograph

10 x 8 inches (unmatted, unframed)

Charles Denson Archive



108. Bruce Davidson

Untitled, July 4, 1962

Gelatin silver print

11 x 14 inches

Howard Greenberg Gallery, New York, PF54408



109. Ralph Fasanello

Workers' Holiday—Coney Island, 1965

Oil on canvas

60 x 96 inches

Collection American Folk Art Museum, New York. Gift of Maurice and Margo Cohen, Birmingham, Mich., 2002.1.1



110. Leon Levinstein

Coney Island, New York, 1976

Gelatin silver print

14 x 17 inches

Howard Greenberg Gallery, New York, 0050811-111



111. Leon Levinstein

Beach Scene: Woman in Bikini Cuddling Baby, Coney Island, New York, 1960s

Gelatin silver print

14 x 11 1/16 inches

Howard Greenberg Gallery, New York



112. Jerry L. Thompson

Coney Island, 1972, 1972

Photograph

Image: 7 3/4 x 9 5/8 inches; sheet: 8 x 10 inches

Yale University Art Gallery, New Haven, Conn. Director's Purchase Fund, 1972.118.1



113. Jerry L. Thompson

Spanish Boy, 1973

Gelatin silver print

10 x 8 inches

Collection of the artist



114. Jerry L. Thompson

Young Man with Afro, 1973

Gelatin silver print

10 x 8 inches

Collection of the artist



115. Directed by Woody Allen; Rollins-Joffe Productions
Annie Hall, 1977
Film clip, running time: 34 seconds
Copyright 1977 Metro-Goldwyn-Mayer. All Rights Reserved.



116. Harvey Stein
The Thunderbolt, 1997
Digital, inkjet archival print
13 x 19 inches
Collection of the artist



117. Rem Koolhaas with Madelon Vriesendorp
Dreamland Project, Coney Island, Brooklyn, New York, 1977
Watercolor and synthetic polymer paint on diazotype
41 3/4 x 22 inches
The Museum of Modern Art, New York. Gift of Frederieke S. Taylor, 862.2007



118. Red Grooms
Greetings from Coney Island, 2007
Acrylic on cast plastic on wood, edition 4 of 5
30 3/8 x 42 3/4 x 4 3/4 inches
Courtesy of Marlborough Gallery, New York



119. Arnold Mesches
Coney Island, 1999
Acrylic on canvas
96 x 87 inches
Wadsworth Atheneum Museum of Art, Hartford, Conn. Gift of Jill Ciment, 2012.29.1



120. Directed by Paul Mazursky; Morgan Creek Productions
Enemies, a Love Story, 1989
Film clip, running time: 2 minutes, 21 seconds
Licensed by Morgan Creek Productions



121. Arnold Mesches
Anomie 1991: Winged Victory, 1991
Acrylic on canvas
92 x 135 inches
The San Diego Museum of Art. Museum purchase with partial funding from the Richard Florsheim Art Fund, 1993.1



122. *Cyclops Head from Spook-A-Rama*, c. 1955
Mixed media
60 x 47 x 42 inches
The Vourderis Family. Deno's Wonder Wheel



123. Arnold Mesches
Anomie 2001: Coney from the series *Anomie*, 1997
 Acrylic on canvas
 80 x 96 inches
 Whitney Museum of American Art, New York. Gift of Jill Ciment, 2006.336



124. Sue Coe
Side Splitting Fooleries: Edison Tests the Electric Chair on an Elephant, 2007
 Graphite, gouache, and watercolor on board
 40 x 54 1/2 inches
 The Galerie St. Etienne, New York



125. Camera: Edwin S. Porter and/or Jacob B. Smith; The Edison Manufacturing Company
Electrocuting an Elephant, Jan. 1903
 Film clip, running time: 1 minute, 16 seconds
 Copyright Kino International Corp.



126. Animation by Lucy Dyson; All India Radio
Persist, 2008
 Music video, running time: 3 minutes, 35 seconds
 Licensed by All India Radio



127. Lisa Kereszi
Ball Toss, Coney Island, Brooklyn, 2001, 2001
 Chromogenic print
 30 x 38 inches
 Courtesy of Lisa Kereszi & Yancey Richardson Gallery



128. Lisa Kereszi
Eye on Door, Spook-A-Rama, Deno's, Coney Island, N.Y., 2005, 2005
 Chromogenic print
 30 x 38 inches
 Courtesy of Lisa Kereszi & Yancey Richardson Gallery



129. Marie Roberts
A Congress of Curious Peoples, 2005
 Acrylic on unstretched canvas
 7 x 10 feet
 Collection of Liz and Marc Hartzman



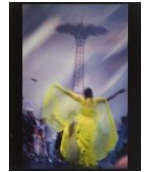
130. Harvey Stein
Stilt Walker in Mermaid Parade, 2006
 Digital, inkjet archival print
 13 x 19 inches
 Collection of the artist



131. Harvey Stein
The Hug: Closed Eyes and Smile, 1982
 Digital, inkjet archival print
 13 x 19 inches
 Collection of the artist



132. Lynn Hyman Butler
Untitled, Coney Island Series, 1996
 Cibachrome print
 14 x 11 inches
 Brooklyn Museum. Gift of the artist, 1999.13.1



133. Directed by Darren Aronofsky; Artisan Entertainment
Requiem for a Dream, 2000
 Film clip, running time: 1 minute, 11 seconds
 Courtesy of Lionsgate



134. Mary Ellen Mark
Coney Island, Brooklyn, New York, 1994
 Gelatin silver print
 16 x 20 inches
 Mary Ellen Mark Library, New York



135. Mary Ellen Mark
Coney Island, Brooklyn, New York, 1983
 Gelatin silver print
 16 x 20 inches
 Mary Ellen Mark Library, New York



136. DAZE
Kiddyland Spirits, 1995
 Oil on canvas
 42 x 71 inches
 Collection of the artist



137. DAZE
Coney Island Pier, 1995
 Oil on canvas
 60 x 80 inches
 Collection of the artist



138. Harvey Stein
The Jump, 2007
 Digital, inkjet archival print
 13 x 19 inches
 Collection of the artist



139. Directed by Spike Lee; Touchstone Pictures and 40 Acres & A Mule Filmworks
He Got Game, 1998
 Film clip, running time: 5 minutes, 15 seconds
 Copyright 1998 Touchstone Pictures



140. Frederick Brosen
Fortune Teller, Jones Walk, Coney Island, 2008
Watercolor over graphite on paper
17 7/8 x 11 1/4 inches
Courtesy of Hirschl & Adler Modern, New York



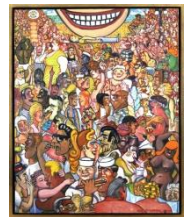
141. Frederick Brosen
Astroland, 2008-2013
Watercolor over graphite on paper
34 x 54 inches [sheet]
Collection of Heather Richards Evans



142. Red Grooms
Weegee 1940, 1998-99
Acrylic on paper
56 x 62 x 3 1/2 inches
Private Collection



143. Red Grooms
The Funny Place, 2005
Oil on canvas
50 x 40 inches
Courtesy of Marlborough Gallery, New York



144. Swoon
Coney, Early Evening, 2005
Linoleum print on Mylar, mixed media
Variable; overall: 213 x 39 x 113 inches
Brooklyn Museum. Healy Purchase Fund B, Emily Winthrop Miles Fund, and Designated Purchase Fund, 2005.41

